

Dear Valued Customer:

First of all, I want to thank all of you for your business and support. We value each and every one of you and because of you we have been able to make PIC Plastics a better company.

We continue to seek out ways to improve our process and service. One of things we are very excited about is automated system to send out UPS tracking numbers via email. This allows you to received tracking information as soon as the package leaves our dock. If you are interested in the service please request a sign up sheet. We are working on a revamp of the website to include even more of the documents you request on a regular basis.

Look for more new and exciting news in the very near future. With your help and support we are looking forward to a great year.

Sincerely,

Jim Zimmerman
President



Terms & Conditions

Prices:

All prices are F.O.B our plant unless otherwise noted. All prices are subject to change without notice.

Terms:

Terms are net 30 days unless otherwise noted on the invoice. The customer shall pay all sales tax imposed by any state outside of Missouri. All payments are due in U.S. currency with international shipments being pre-paid.

Returns:

Call customer service at 1-800-654-0409 to receive an RMA (Return Merchandise Authorization) number. Returns must have the RMA number clearly marked on the package. Credit will be issued after an inspection of the goods has taken place. Packages without an RMA number will be refused. Color fittings and jacket are made to order, return of these items is not allowed.

Shipping Shortage and Damage:

Your order has been packaged with great care. However, if it is received damaged please use the following guidelines.

Truck Shipments:

Indicate on the bill of lading that damage is present. If it is concealed damage call your local terminal within 10 days. Notify PIC as soon as you have received a damage claim number and we will make replacement parts and take over the claim.

UPS Shipments:

Call 1-800-PICKUPS (742-5877), state "I'm calling to report damage." Be prepared to answer the following questions:

- 1) What is the shipper account number? AT5-072
- 2) What is the item: Describe the items
- 3) What is the value of the item? Give the full purchase price

As soon as you have been assigned a claim number call PIC at 1-800-654-0409 and we will replace your parts as soon as possible. UPS will send someone to pick up the damage goods, retain all parts and packaging related to the shipment.

All claims for damage must be made within 10 days. Please inspect your packages carefully before signing the delivery ticket.

3 Easy Ways to Order

By Phone:



Our friendly knowledgeable staff is waiting to help you. Call us at 1-800-654-0409. Place your orders by phone 8:00 to 4:30 Monday thru Friday. In stock items ordered shipping via UPS received by noon are shipped the same day.

By Fax:



Simply fax your order to us at 1-417-359-9899 24 hours a day, every day. We will process your order and can even fax you back confirmation if you like.

By Email:



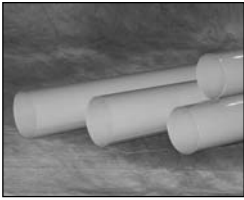
Email your order to order@pic-plastics.com 24 hours a day, everyday. We will send back a confirmation and estimated ship date.

Questions?



To make changes, additions or to check on an existing order call us at 1-800-654-0409. Need MSDS Sheets call or go online at www.pic-plastics.com.

Jacketing



Jacketing is precut and curled to precise tolerances. Order in four-foot lengths and by outside diameter or pipe/insulation combination. There is never a box quantity, order what you need.

List Price - PVC Jacketing (Cut and Curl)		
Insulation O.D./Inches	FG-20 (20 Mil)	FG-30 (30 Mil)
2.0	1.22	1.36
2.5	1.29	1.56
3.0	1.36	1.77
3.5	1.42	2.04
4.0	1.56	2.30
4.5	1.70	2.57
5.0	1.83	2.71
5.5	1.97	2.98
6.0	2.10	3.25
6.5	2.24	3.53
7.5	2.38	3.93
8.5	2.71	4.34
9.5	3.06	4.75
10.5	3.25	5.29
11.5	3.53	5.84
12.5	3.80	6.25
14.0	4.34	6.64
15.0	4.48	7.32
16.0	4.61	7.87
17.0	4.89	8.41
18.0	5.16	8.82
19.0	5.25	9.02
20.0	5.50	9.22
21.0	5.63	9.34
22.0	5.76	9.47
23.0	5.89	9.60
24.0	6.02	9.73
25.0	6.14	9.86
26.0	6.27	9.98
27.0	6.40	10.11
28.0	6.53	10.24
30.0	6.66	10.37
32.0	6.78	10.50

Please specify pipe size/insulation thickness or outside diameter and color when ordering.

Remember there is ***no additional charge for color.***

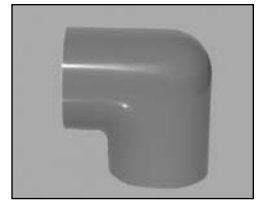
- For sizes not listed call for price and availability.
- Colors are recommended for indoor use only.

Short Radius 90's and 45's

All white fittings start out with high gloss E-84 approved low smoke and UV stabilized sheets before being formed to exacting standards. Fittings are then sealed with PIC welding adhesive for a neat appearance and easy installation (note: fittings 20.0 and larger in OD are unsealed for shipping purposes).

90° Elbows - Please specify outside diameter and color when ordering.

45° Elbows - Please specify outside diameter and color when ordering.



List Price		
Insulation O.D./Inches	90° SR ELLS	45° ELLS
2.0	4.42	4.42
2.5	4.62	4.61
3.0	4.75	4.75
3.5	5.09	5.09
4.0	5.43	5.43
4.5	6.11	6.11
5.0	6.45	6.45
5.5	7.81	7.81
6.0	9.84	9.84
6.5	10.85	10.85
7.5	14.92	14.92
8.5	16.63	16.63
9.5	18.32	18.32
10.5	20.02	20.02
11.5	21.71	21.71
12.5	23.74	23.74
14.0	29.17	29.17
15.0	31.88	31.88

List Price		
Insulation O.D./Inches	90° SR ELLS	45° ELLS
16.0	34.60	34.60
17.0	37.99	37.99
18.0	40.70	40.70
19.0		44.77
20.0		51.56
21.0		56.99
22.0		59.70
23.0		62.41
24.0		65.13
25.0		67.84
26.0		74.62
27.0		92.26
28.0		119.40
30.0		162.82
34.0		189.95

Please specify pipe size/insulation thickness or outside diameter and color when ordering.

Remember there is ***no additional charge for color.***

- Shaded sizes are cut down from LR90's, please specify pipe/insulation combination for best fit.
- For sizes not listed call for price and availability.
- Colors are recommended for indoor use only.

Long Radius Fittings



When it comes to Long Radius fittings PIC has you covered, we have over 115 different sizes. Each one is made for a specific pipe/insulation combination, no more trying to use one cover for multiple sizes.

All white fittings start out with high gloss E-84 approved low smoke and UV stabilized sheets before being formed to exacting standards. Fittings are then sealed with PIC welding adhesive for a neat appearance and easy installation (note: fittings 20.0 and larger in OD are unsealed for shipping purposes).

Long Radius Fittings								
List Price	O.D.	Pipe and Insulation Combination						
\$5.43	3.0	3/4 x 1						
\$5.77	3.5	1 x 1						
\$6.11	4.0	1 1/2 x 1	3/4 x 1 1/2					
\$6.78	4.5	4 x 0	3 x 1/2	2 x 1	1 x 1 1/2			
\$7.13	5.0	3 x 3/4	2 1/2 x 1	1 1/2 x 1 1/2	3/4 x 2			
\$8.55	5.5	5 x 0	4 x 1/2	3 x 1	2 x 1 1/2	1 x 2		
\$10.85	6.0	4 x 3/4						
\$12.21	6.5	6 x 0	5 x 1/2	4 x 1	3 x 1 1/2	2 x 2		
\$16.28	7.5		6 x 1/2	5 x 1	4 x 1 1/2	3 x 2	2 x 2 1/2	
\$17.98	8.5	8 x 0	6 x 1	5 x 1 1/2	4 x 2	3 x 2 1/2		
\$20.02	9.5	8 x 1/2	6 x 1 1/2	5 x 2	4 x 2 1/2	3 x 3		
\$22.39	10.5	10 x 0	8 x 1	6 x 2	5 x 2 1/2	4 x 3	3 x 3 1/2	2 x 4
\$25.10	11.5	8 x 1 1/2	7 x 2	6 x 2 1/2	5 x 3	4 x 3 1/2	3 x 4	
\$29.17	12.5	10 x 1	8 x 2	7 x 2 1/2	6 x 3	5 x 3 1/2	4 x 4	
\$33.24	14.0	10 x 1 1/2	9 x 2	8 x 2 1/2	6 x 3 1/2	5 x 4		
\$35.96	15.0	12 x 1	10 x 2	8 x 3	6 x 4	5 x 4 1/2	4 x 5	
\$38.67	16.0	14 x 1	12 x 1 1/2	10 x 2 1/2	8 x 3 1/2	6 x 4 1/2	5 x 5	4 1/2 x 5 1/2
\$40.03	17.0	14 x 1 1/2	12 x 2	10 x 3	8 x 4	6 x 5		
\$44.10	18.0	16 x 1	14 x 2	12 x 2 1/2	10 x 3 1/2	8 x 4 1/2	5 x 6	
\$47.49	19.0	16 x 1 1/2	12 x 3	10 x 4	8 x 5	6 x 6		
\$54.27	20.0	18 x 1	16 x 2	14 x 3	10 x 4 1/2			
\$56.99	21.0	18 x 1 1/2	16 x 2 1/2	12 x 4	8 x 6	10 x 5		
\$89.60	22.0	20 x 1	18 x 2	16 x 3	14 x 4			
\$94.72	23.0		12 x 5					
\$99.84	24.0	20 x 2	18 x 3	16 x 4	12 x 5 1/2			
\$104.96	25.0	14 x 5 1/2	12 x 6					
\$110.08	26.0	20 x 3						
\$115.20	27.0	24 x 1 1/2	20 x 3 1/2					
\$120.32	28.0	24 x 2	20 x 4	16 x 6				
\$162.82	30.0	24 x 3						
\$189.95	34.0	30 x 1 1/2 (6 pcs)						

Please specify pipe size/insulation and color when ordering and remember there is ***no additional charge for color.***

- Shaded fittings are 4 piece fittings except for 34.0 which is 6 pieces.
- For sizes not listed call for price and availability.
- Fittings centerlines are 1.5 x pipe size.
- Colors are recommended for indoor use only.

Tee's and Valve Covers

All white fittings start out with high gloss E-84 approved low smoke and UV stabilized sheets before being formed to exacting standards. Fittings are then sealed with PIC welding adhesive for a neat appearance and easy installation (Note: fittings 20.0 and larger in OD are unsealed for shipping purposes).



Ordering Tee's for Valves:

Valves by design and style are usually larger than the pipe to which they are joined. Example: A 3" iron pipe with 2 inches of insulation has an O.D. of 7-1/2". A 3" standard flange valve with 2 inches of insulation has an O.D. of 11-1/2". Therefore, you need to order one 11.5 tee cover, one 11.5 cap to cover the valve stem, and two 11.5 to 7.5 reducing caps to step down at the inlet/outlet.

Pricing	
Insulation O.D./Inches	List Price
2.0	4.75
2.5	4.95
3.0	5.09
3.5	5.43
4.0	5.77
4.5	6.45
5.0	7.13
5.5	8.14
6.0	10.85
6.5	13.57
7.5	20.35
8.5	23.07
9.5	25.78
10.5	28.49
11.5	31.21
12.5	33.92
14.0	39.35
15.0	44.77
16.0	47.49
17.0	50.20
18.0	52.92
19.0	54.27
20.0	61.06
21.0	65.13
22.0	67.84
23.0	N/A
24.0	74.62
25.0	N/A
26.0	88.19

Standard Flange Valves		
Iron Pipe Size	Insulation Thickness	Order Tee OD
1/2" oval	1/2"-1 1/2"	7.5
	2" - 3"	8.5
3/4" oval	1/2"-1 1/2"	7.5
	2" - 3"	8.5
1" sq.	1/2" -1 1/2"	7.5
	2"	8.5
	2 1/2" - 3"	9.5
1 1/4" sq.	1/2" -1 1/2"	7.5
	2"	8.5
	2 1/2" - 3"	9.5
1 1/2" sq.	1/2" -1 1/2"	8.5
	2"	9.5
	2 1/2" - 3"	10.5
2" sq.	1/2" -1 1/2"	8.5
	2"	9.5
	2 1/2" - 3"	10.5
2 1/2" sq.	1/2" -1 1/2"	10.5
	2"	11.5
	2 1/2" - 3"	12.5
3" sq.	1/2" -1 1/2"	10.5
	2"	11.5
	2 1/2" - 3"	12.5
4" sq.	1/2" -1 1/2"	12.5
	2"	14.0
	2 1/2" - 3"	14.0
5" sq.	1/2" -1 1/2"	15.0
	2"	16.0
	2 1/2" - 3"	17.0
6" sq.	1/2" -1 1/2"	16.0
	2"	17.0
	2 1/2" - 3"	18.0

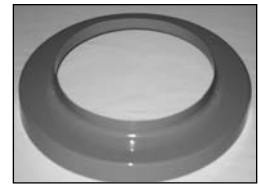
Standard Threaded Valves		
Iron Pipe Size	Insulation Thickness	Order Tee OD
1/2"	1/2"-1 1/2"	4.5
	2" - 3"	5.5
3/4"	2 1/2" - 3"	7.5
	1/2"-1 1/2"	5.0
1"	2"	5.5
	2 1/2" - 3"	7.5
	1/2" -1 1/2"	5.5
1-1/4"	2"	6.5
	2 1/2" - 3"	7.5
	1/2" -1 1/2"	6.5
1-1/2"	2"	7.5
	2 1/2" - 3"	8.5
	1/2" -1 1/2"	7.5
2"	2"	8.5
	2 1/2" - 3"	9.5
	1/2" -1 1/2"	7.5
2"	2"	8.5
	2 1/2" - 3"	9.5

Please specify outside diameter and color when ordering and remember there is ***no additional charge for color.***

- For best results, specify size, style and type of valve along with wall thickness of insulation.
- For sizes not listed call for price and availability.
- Colors are recommended for indoor use only.

Caps

Round caps are smooth and neat to match most any standard pipe/insulation dimensions.



Half caps are designed with extra material for slitting the cap and resealing without the need for "tabs", scribed with various centerlines to ease fabrication for simple reducers or pass through pipes.



Reducing Caps step down from one outside diameter to another. They can be used on most PIC elbows, tees and victaulic fittings.

List Price - Caps			
Insulation O.D./Inches	Round Caps	Half Caps	Reducing Caps
2.0	0.95	0.95	N/A
2.5	1.09	1.09	1.54
3.0	1.22	1.22	1.73
3.5	1.36	1.36	1.92
4.0	1.50	1.50	2.11
4.5	1.63	1.63	2.30
5.0	1.77	1.77	2.50
5.5	1.89	1.89	2.69
6.0	1.59	N/A	2.88
6.5	2.18	2.18	3.07
7.5	2.38	2.38	3.37
8.5	2.57	2.57	3.65
9.5	2.85	2.85	4.03
10.5	3.06	3.06	4.33
11.5	3.39	3.39	4.80
12.5	3.74	3.74	5.29
14.0	4.42	4.42	6.25
15.0	5.09	5.09	7.21
16.0	6.11	6.11	8.64
17.0	6.78	6.78	9.60
18.0	7.81		11.05
19.0	8.82		12.48
20.0	9.50		13.44

List Price - Caps		
Insulation O.D./Inches	Round Caps	Reducing Caps
21.0	12.21	17.28
22.0	13.57	19.20
23.0	14.92	21.12
24.0	16.28	23.04
25.0	17.64	24.96
26.0	19.00	26.88
28.0	21.71	30.72
29.0	23.07	32.64
30.0	24.42	34.56
32.0	25.78	36.48
33.0	26.46	37.44
34.0	27.14	38.40
35.0	28.49	40.32
36.0	29.85	42.24
38.0	32.56	46.08
39.0	33.92	48.00
40.0	35.28	49.92

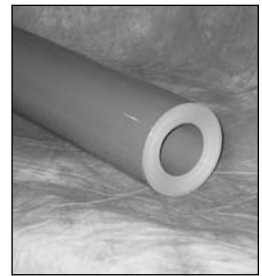


Please specify outside diameter and color when ordering and remember there is ***no additional charge for color.***

- Shaded caps are 2 pieces
- For sizes not listed call for price and availability.
- Price reducers by the largest outside diameter.
- For caps larger than 40" outside diameter call for a curved segment/flat sheet price.

PVC Rolls

Rolls are cut to length and can either be flatstock or tempered rollstock. Rollstocks will have a memory to help maintain curl (recommended for custom cutting of pipe covers). Flatstock will lay flatter with less creasing on large diameters (recommended for tanks and large duct work).



When ordering specify thickness, width, length, color, and flatstock or rollstock.

White Rolls			
	Dimensions	Square Feet Per Roll	List Price
FG-10	.010 x 35-1/2" x 203'	600	195.38
	.010 x 35-1/2" x 102'	300	97.69
	.010 x 48" x 200'	800	265.93
	.010 x 48" x 100'	400	132.97
FG-20	.018 x 35-1/2" x 102'	300	202.16
	.018 x 48" x 100'	400	265.93
	.018 x 48" x 75'	300	203.52
	.018 x 48" x 50'	200	141.11
FG-30	.028 x 35-1/2" x 102'	300	305.28
	.028 x 48" x 100'	400	390.76
	.028 x 48" x 75'	300	298.50
	.028 x 48" x 50'	200	203.52
FG-40	.040 x 48" x 100'	400	540.01
	.040 x 48" x 50'	200	270.00

Color Rolls			
	Dimensions	Square Feet Per Roll	List Price
FG-10	.010 x 48" x 200'	800	265.93
	.010 x 48" x 100'	400	132.97
FG-20	.018 x 48" x 100'	400	265.93
	.018 x 48" x 75'	300	203.52
	.018 x 48" x 50'	200	141.11
FG-30	.028 x 48" x 100'	400	390.76
	.028 x 48" x 75'	300	298.50
	.028 x 48" x 50'	200	203.52

Please specify pipe size, insulation thickness, and color when ordering.
Remember this is ***no additional charge for color.***

- For sizes not listed call for price and availability.
- Colors are recommended for indoor use only.

PVC Sheets

You can buy the same high quality sheets we use to make fittings. Our sheets are custom made to our exacting specifications. They have hundreds of field applications and are easy to customize into almost any size or shape. Sheet orders of less than 50 sheets will be sent via UPS, rolled 5 per box. Orders of 50 sheets or more will be shipped flat on a skid. If requested sheet orders of less than 50 sheets can be shipped flat with a skid charge.

PVC Flat Sheets		
Standard Length Sheets	Square Feet per sheet	List Price
.032 x 48" x 77" Color Only	25.67	\$28.98
.025 x 48 1/2" x 97 3/4" White Only	32.92	\$29.03
.031 x 48 1/2" x 97 3/4" White Only	32.92	\$37.16
.034 x 48 1/2" x 97 3/4" White Only	32.92	\$40.65
.040 x 48 1/2" x 97 3/4" White Only	32.92	\$46.45
.045 x 48 1/2" x 97 3/4" White Only	32.92	\$52.26
Custom Length Sheets (Price per square foot)		
.010 White in 35 1/2" or 48" wide		\$0.36
.018 White in 35 1/2" or 48" wide		\$0.70
.027 White in 35 1/2" or 48" wide		\$0.99
.040 White 48" wide		\$1.41
.018 Color in 48" wide		\$0.70
.027 Color in 48" wide		\$0.99

Please specify outside diameter and color when ordering and remember there is ***no additional charge for color.***

- For sizes not listed call for price and availability.
- Colors are recommended for indoor use only.

Rod Cover and Threaded Fittings

Rod cover is an excellent option for covering small rod, hangers, or conduits. Rod cover comes in 4' lengths and is priced per linear foot. Please specify outside diameter and color when ordering.



Threaded fittings are designed to install over standard 300 lbs pipe fittings with a step down for easy rod cover overlap. We also have welded 90° elbows with a relief for the weld itself.

List Price		
Rod, Pipe Hanger and Conduit Covers		
Outside Diameter	White	Colors
3/8" & 1/2"	0.90	1.02
5/8", 3/4", 7/8" & 1"	1.02	1.15
1 1/8", 1 1/4", & 1 3/8"	1.09	1.22
1 1/2", 1 5/8", & 1 3/4"	1.15	1.28



List Price			
PVC Bare Iron - Welded & Threaded Fittings			
Pipe Size	90° & 45°	Tees	Couplings or Unions
1/2"	4.42	4.75	4.75
3/4"	4.42	4.75	4.75
1"	4.42	4.75	4.75
1 1/4"	4.42	4.75	4.75
1 1/2"	4.42	4.75	4.75
2"	4.75	5.43	5.43
2 1/2"	5.09	6.11	6.11
3"	5.43	7.46	7.46
4"	8.14	10.18	10.18

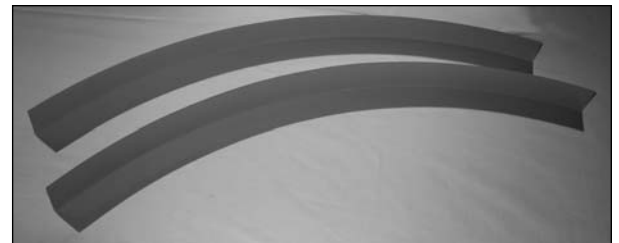
Please specify outside diameter and color when ordering and remember there is ***no additional charge for color.***

- For rod cover over 1 3/4" use jacketing.
- Colors are recommended for indoor use only.
- For sizes not listed call for price and availability.

PVC Angles and Moldings

Angles in both curved and straight help finish up projects with a neat clean appearance. White angle is extruded, while color angle is vacuum formed to a perfect match for all of our fittings and jacket.

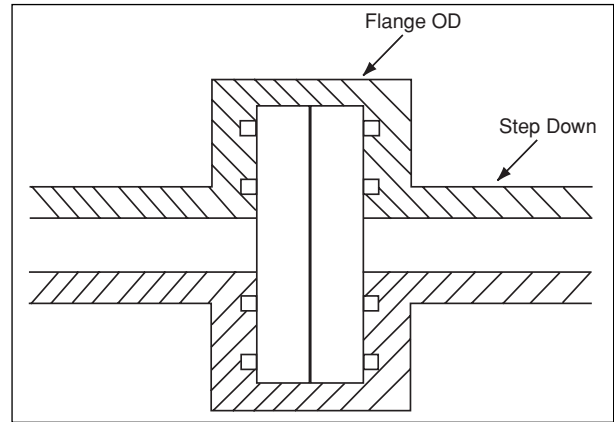
Curved segments make a seamless transition between tank bodies and heads. Order by diameter and circumference or call and we can help you calculate your needs.



PVC Angles and Moldings	
	Price Per Linear Foot
90° Right Angle 1 1/2" x 1 1/2" x 8' Medium duty white	0.33 (net)
90° Right Angle 1 1/2" x 1 1/2" x 5' Vacuum formed colors	1.97 (list)
90° Right Angle Curved Segment for tank ends White or color - Specify inside or outside corner	2.38 (list)

Flange Covers

Designed to fit standard 150 lbs flanges. Specify pipe and insulation thickness when ordering. Covers come with generous legs on the step-downs for easy pipe cover/fitting assembly.



PVC Flange Covers	
Insulation O.D./Inches	List Price
6.5	8.14
7.5	9.50
8.5	10.85
9.5	12.21
10.5	13.57
11.5	14.92
12.5	17.64
14.0	20.35
15.0	24.42
16.0	27.14
18.0	33.92
21.0	37.99
24.0	43.42
27.0	51.56

Victaulic® PVC

Victaulic® PVC covers are designed for easy installation and a neat clean appearance. Covers for 90°, 45°, and tees are engineered with step-downs to accommodate 1/2", 1", 1 1/2" or 2" thick insulation. Simply trim the part to the step down that you need.



Couplings are custom made to your pipe and insulation combination so please specify when ordering.



List Price - PVC Victaulic® Mechanical Fittings			
Pipe Size	90° & 45°	Tees	Couplings
2"	\$12.21	\$14.92	\$8.14
2 1/2"	\$13.57	\$16.28	\$9.50
3"	\$16.28	\$19.00	\$10.85
4"	\$20.35	\$23.07	\$13.57
5"	\$24.42	\$27.14	\$14.92
6"	\$27.14	\$32.56	\$16.28
8"	\$32.56	\$43.42	\$20.35
10"	\$48.84	\$56.99	\$27.14
12"	\$56.99	\$70.55	\$33.92
14"	N/A	N/A	\$38.40
16"	N/A	N/A	\$44.80

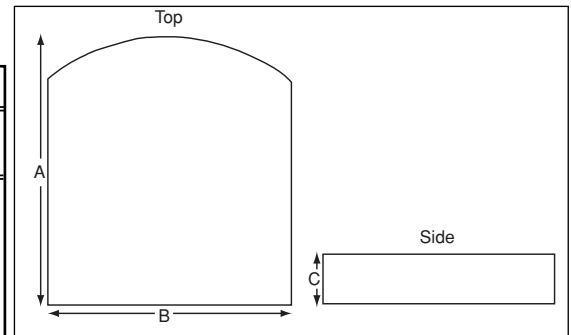
Please specify pipe size, insulation thickness, and color when ordering. Remember this is ***no additional charge for color.***

- Colors are recommended for indoor use only.
- Victaulic® covers are two piece unsealed.

PVC Solid Drain Line Fittings

PVC solid drain line fittings are designed to enclose the p-trap portion of drains. The box shape is fitted to the pipe with an intake and outlet cut into the cover and then either stuffed with loose insulation or filled with foam. Order by pipe/insulation combination. See drawing for actual size.

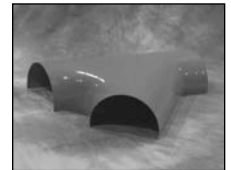
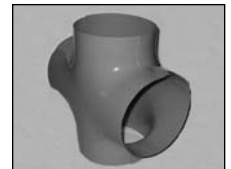
List Price - PVC Solid Drain Line Fittings				
Pipe Size	P-Trap Covers	Dimensions		
		A	B	C
2" x 1"	\$17.64	8"	7"	5"
3" x 1"	\$21.71	10.5"	9.5"	6"
4" x 1"	\$25.78	14.5"	13.5"	9"
6" x 1"	\$33.92	17"	16"	11"



PVC Lateral Y and Crosses

Lateral Y's used for common piping, Y strainers, and many other applications. Four way crosses make great starting points for many custom field valve applications. Order individually or with caps and save.

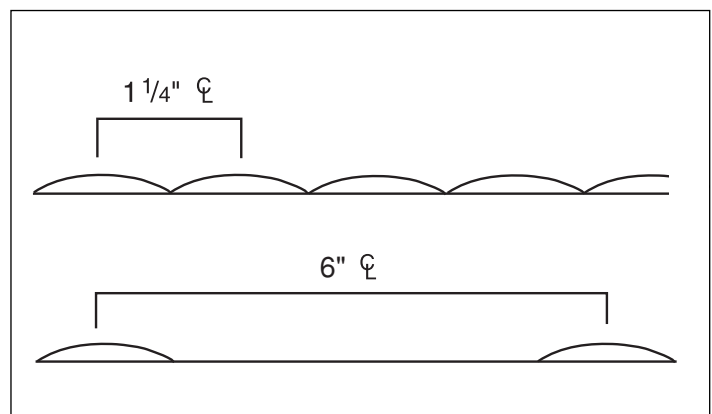
List Price - PVC Lateral Y and Crosses			
O.D.	Lateral Y	Crosses	Crosses w/Caps
3.5	\$10.85	N/A	N/A
4.0	\$11.53	N/A	N/A
4.5	\$12.21	N/A	N/A
5.0	\$13.57	N/A	N/A
5.5	\$14.92	N/A	N/A
6.5	\$19.00	N/A	N/A
7.5	\$27.14	\$29.17	\$36.30
8.5	\$32.56	\$30.53	\$38.26
9.5	\$35.28	\$32.56	\$41.10
10.5	\$37.99	\$34.94	\$43.76
11.5	\$43.42	\$38.67	\$48.84
12.5	\$54.27	\$44.77	\$55.97
14.0	\$59.70	\$56.92	\$70.22



Corrugated Tank Panels

When covering very large tanks our corrugated tank panels make the job a snap. The corrugations add vertical integrity for easy installing and a very impressive appearance. When ordering specify color, thickness, and rib centerline.

List Price - Corrugated Tank Panels	
Thickness	Price
.030 X 43" X 71" White	\$31.21
.040 X 43" X 71" White	\$44.77
.032 X 43" X 71" Color	\$33.92



Accessories

No job can be completed without accessories and we've got you covered to get the job done right.

We offer the finest welding adhesive in the industry, custom formulated to work with our PVC fittings and covers coupled with heavy duty metal applicator guns for long life and increased durability.

PVC tape to help you close the job up right. Remember, order by the case and save 10%!

FDA approved silicone in three colors to help seal it up tight.



Accessories-Net Pricing no discounts apply	
Applicator Gun 20Oz Metal	10.00 each
Applicator Cord-3/16 Diameter-500 feet per roll	39.00 roll
Applicator Cord-3/8 Diameter-300 feet per roll	75.00 roll
Silicone (White, Clear, or Aluminum)	3.28 ea
Duct Tape (2" X 108')	7.50 ea
PVC Tape - White or Colors (2" X 108')	4.35 ea
PVC Tape - White only (1-1/2" X 108')	3.35 ea
PVC Tape - White only (1" X 108')	2.35 ea
PVC Tape - White or Colors (2" X 108')-36 rolls	140.00 case
PVC Tape - White or Colors (1-1/2" X 108')-48 rolls	145.00 case
PVC Tape - White or Colors (1" X 108')-72 rolls	150.00 case
Self-Sealing Lap Tape (SSL Tape) 1"x108'	14.00 roll
White or Clear Adhesive	37.50 gallon
White or Clear Adhesive	11.00 quart
Thinner	13.50 quart

Caution: Adhesive and thinner are flammable liquids.

Please specify pipe size, insulation thickness, and color when ordering.
Remember this is ***no additional charge for color.***

- Adhesive and thinner are flammable liquids and require hazardous shipping.
- For sizes not listed call for price and availability.
- Gallons of adhesive cannot be sent via UPS.
- One gallon of welding adhesive will cover approximately 500 linear feet of jacketing.